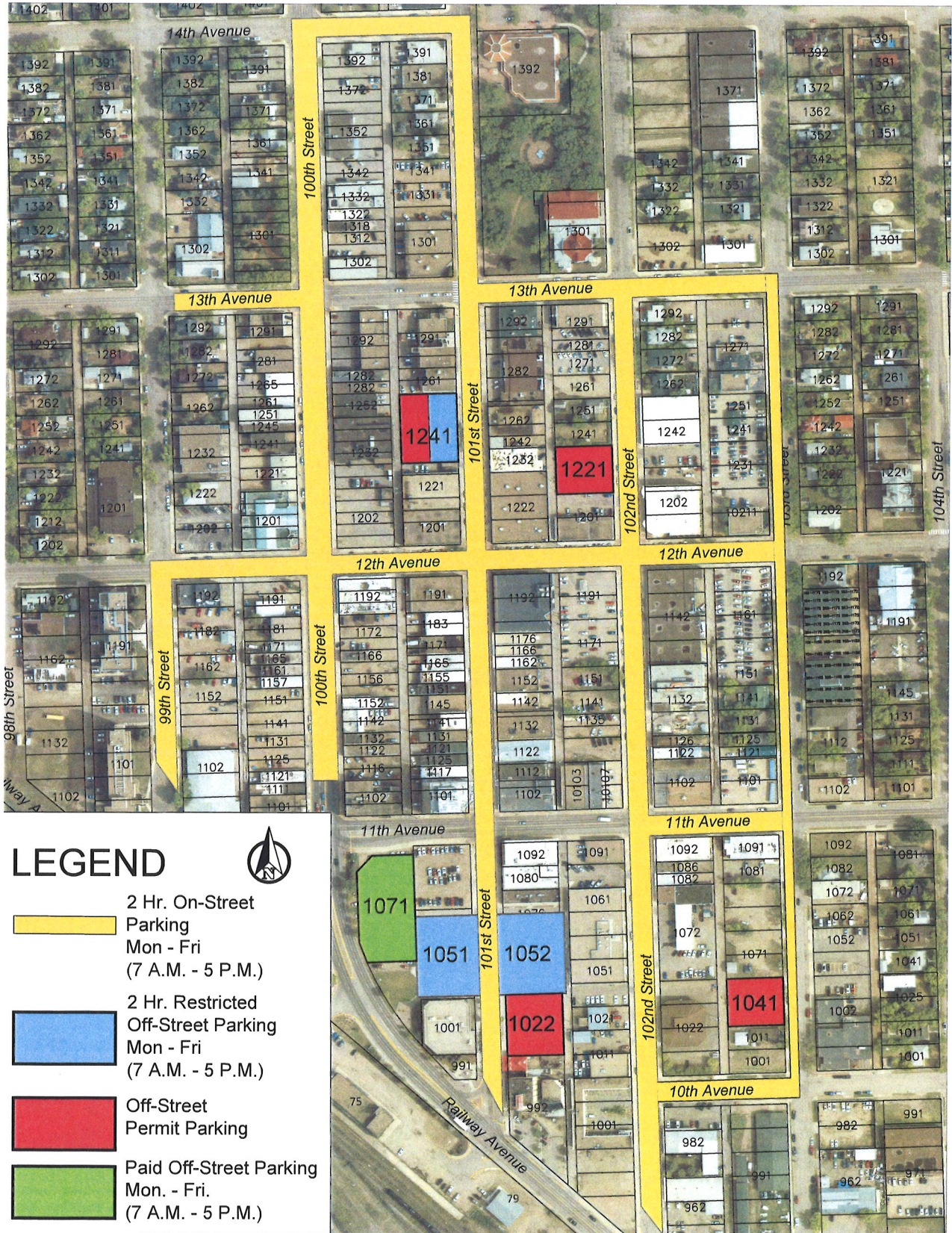

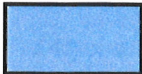



City of North Battleford Restricted Parking Areas Schedule "J" (per Section 47)




LEGEND

 2 Hr. On-Street Parking
Mon - Fri
(7 A.M. - 5 P.M.)

 2 Hr. Restricted Off-Street Parking
Mon - Fri
(7 A.M. - 5 P.M.)

 Off-Street Permit Parking

 Paid Off-Street Parking
Mon. - Fri.
(7 A.M. - 5 P.M.)

